



UNIVERSITY OF MISSOURI EXTENSION

# Pulaski County

# 2023

## Annual Report

301 Historic Rt. 66E Ste 208  
Waynesville, MO 65583  
(573)774-4766  
[pulaskico@missouri.edu](mailto:pulaskico@missouri.edu)

**SERVE  
MISSOURI.**

**DELIVER  
MIZZOU.**



**Extension**  
*University of Missouri*

an equal opportunity/ADA institution



Office of Extension  
and Engagement  
*University of Missouri*

OFFICE OF THE VICE CHANCELLOR  
FOR EXTENSION AND ENGAGEMENT  
108 Whitten Hall  
Columbia, MO 65211  
PHONE 573-882-2394  
EMAIL: [cchiggins@missouri.edu](mailto:cchiggins@missouri.edu)

December 2023

Dear county commissioners and friends of MU Extension and Engagement,

Thank you for your important partnership with the University of Missouri Extension this past year.

I want to highlight three areas that address needs you helped us identify.

You may recall that the FY 23 state budget provided a one-time \$5 million infusion to MU Extension for growth. Of that, we allocated about \$3 million for field faculty in the areas of agriculture, 4-H, health/human development and business and community development.

Through a dedicated hiring effort, and thanks to that allocation, we have hired 168 new employees since November 2022. That includes 72 academic/faculty members, most of whom are field specialists in a priority area noted above, and 96 staff members (e.g., office administrators, youth and food and nutrition associates, etc.).

We also returned more faculty to local program delivery that best serves your county's needs, while preserving the partnership and relationship building work you value. Our extension and engagement specialists focus full-time on that work as they serve their assigned multi-county groups. Currently, 19 have been hired, with two more in the pipeline.

Finally, we are prioritizing our work with county extension councils. In the new role of partnership and council development director, Lorin Fahrmeier focuses on strengthening council representation and governance. This role will build stronger links with regional, educational and campus leadership to better identify and address local priorities.

At the UM System level, our engagement work across four universities and with leaders across the state makes a difference in areas of greatest need: broadband, workforce development, health access, food security and healthy futures for our youth.

Your county annual report shows what we are accomplishing together as we Serve Missouri and Deliver Mizzou. We look forward to strengthening that partnership with county commissioners and community stakeholders in the coming year.

Sincerely,

Chad Higgins, PhD  
Interim Vice Chancellor, MU Extension and Engagement  
Chief Engagement Officer, UM System

# Who we are

## Faculty and staff



Rudra Baral-Field Specialist in Agronomy  
Gatlin Bunton-Director, Wurdack Extension & Education Center. Field Specialist in Agronomy  
Christine Dredge-Youth Program Associate  
Charles Ellis-Field Specialist in Agricultural Systems Technology  
Kevin Faulk-Nutrition Program Associate  
Leslie Fischer-Field Specialist in International Trade  
Sarah Higgins-Field Specialist in Natural Resources  
Leslie Lawson-4-H Youth Development Educator  
Eric Meusch-Field Specialist in Livestock  
Bethany Prenger-Field Specialist in 4-H Youth Development  
Brandi Richardson-Extension Engagement Specialist  
Sharon Swenson-County Office Support Staff  
Ray Walden-Field Specialist in Community Development  
Allen Waldo-Missouri Apex Accelerator Specialist

## Council members

Stacy Amick-Kramer, Chairman  
MaryFran Mier, Vice-chairman  
Linda Gifford, Secretary  
Kay Powell, Treasurer  
Jim Dack, Member  
Courtney Manfred, Member



## County commissioners

Gene Newkirk, Presiding Commissioner  
Charles Bassett, Eastern District  
Andy Helms, Western District

# Budget and more

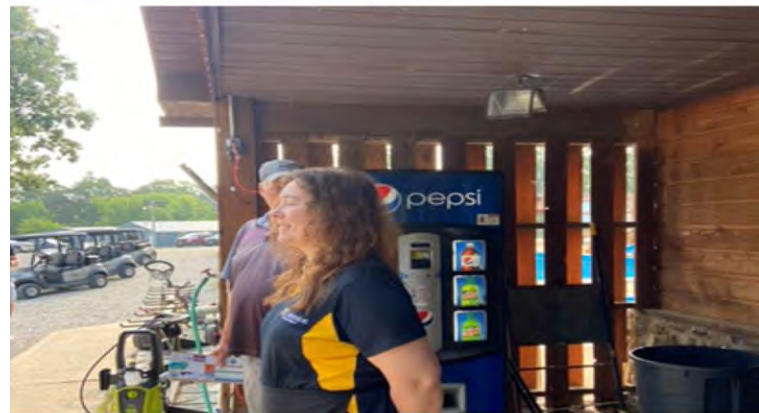
## Appropriations budget

### Income

County Appropriations	20,000
<b>Total Income</b>	<b>24,004</b>

### Expenses

Salaries/Benefits	11,600
Travel	1,492
Postage	321
Office Supplies/Service	3,665
Insurance	738
Rent/lease	563
<b>Total Expenses</b>	<b>18,379</b>



## Return on investment

University System	100,000
Donations	14,000
Program Revenue	4,087



## MU Extension is a unique funding partnership.

Extension funding is a three-way partnership of federal, state and county government. Federal and state money, through the University of Missouri system, pay professional staff salaries, training costs, computers and communication equipment. County funds support the local office, secretarial and youth assistant salaries, staff mileage and council expenses.

The Pulaski County Extension Council, faculty and staff would like to express our appreciation to the Pulaski County Commissioners for their continued support of extension programs.



## Local Support

Did you know you can donate directly to Pulaski County Extension with a gift to be used immediately or as an endowment contribution for long term efforts. Monies put into the endowment are left forever to earn interest with the county office benefiting each year. You can also direct your donation to a specific program such as 4-H or Master Gardeners.



# Pulaski County

## UM System Footprint in the county in 2023



### FY23 county students

**330 students**

- 176 Undergraduates
- 154 Graduate and professional students
- 255 Full-time students
- 75 Part-time students
- 56 Pell grant recipients (aid year 2023)



### County employees and retirees

**79 people employed by UM**

- 71 Campuses
- 5 MU Health Care
- 3 UM System

21 UM retirees and beneficiaries

UM salary and retirement income: \$3.0 million

UM state tax revenue: \$70,730

UM federal tax revenue: \$430,331



### County alumni

**Selected school alumni**

- 5 Medicine
- 38 Nursing
- 41 Health Professions
- 7 Dentistry
- 5 Pharmacy
- 1 Optometry
- 5 Veterinary Medicine
- 69 Agriculture
- 225 Engineering
- 17 Law

**Alumni teaching K-12**

- 44 teachers
- 7.4% of all district teachers



### County breakdown

**MU**

- 107 students
- 398 alumni
- 14 employees

**UMKC**

- 8 students
- 46 alumni
- 0 employees

**Missouri S&T**

- 202 students
- 280 alumni
- 57 employees

**UMSL**

- 13 students
- 43 alumni
- 0 employees



County population: 53,460



### County services provided

**Health care (FY23)**

- 2,628 in-state patients seen at MU Health Care, with \$1.7 million of uncompensated care
- 5 in-state patients seen at UMKC School of Dentistry with a statewide average of \$43.61 per patient in uncompensated care
- MU Health Care's Missouri Telehealth Network recorded 818 visits to 405 patients having ZIP codes associated with the county

**Extension (2022)**

- 115 Total educational contacts from MU Extension to residents of the county, including:
- 14 contacts related to productive farming, better gardening, and managing natural resources
- 101 contacts related to healthy eating and aging, strengthening families, personal finance, or youth development



### Construction projects

- \$722,064 remitted to 2 county vendors, for 3 projects



### County properties and offices

MU Extension in: Pulaski County



# Pulaski County

## UM System Statewide Footprint

### Economic and Community Development Highlights

- In 2022, Business Development Specialists worked with small businesses and entrepreneurs statewide to create or retain 81,645 jobs.



**\$3.1**  
billion

For every dollar invested from 2019 to 2021, the MU Extension Business Development Program has returned \$133 in economic impact for its clients by increasing sales more than \$1.6 billion. For a total impact of \$3.1 billion, the program has generated more than 37,000 jobs and attracted nearly \$451 million in capital investments and \$1.5 billion in government contracts.

- Between FY17 and FY22, UM System brought Missouri more than \$1.46 billion in federal and private research funds, funded primarily from outside the state, but spent within the state.



In FY23, UM System was issued 33 patents and filed 61 new U.S. patent applications.

- In FY23, the UM System awarded 805 design and construction project contracts throughout Missouri, for a total investment of \$279.2 million in the state.



In FY23, to improve access to medical and health related services, MU Health Care's Missouri Telehealth Network's Show-Me ECHO program provided 18,381 hrs of case-based instruction to 2,938 learners located in 112 of 114 Missouri counties and the city of St. Louis.

### Education and Training Provided



41,992 police, fire fighters, and medical professionals attending continuing education (2022)



Agriculture and natural resource programs served 174,692 farmers and related businesses (2022)



311,749 youth and stakeholder educational contacts in 4-H clubs, schools, camps and other programs (2022)

### Education Highlights

#### FY23 Financial Aid Awards

In FY23, 67.3% of the UM System's 80,702 students received financial aid totaling \$973.7 million

MU

UMKC

27,256

\$536.0M

11,859

\$217.3M

students receiving financial aid

financial aid awarded

students receiving financial aid

financial aid awarded

Missouri S&T

UMSL

6,748

\$117.7M

8,489

\$102.8M

students receiving financial aid

financial aid awarded

students receiving financial aid

financial aid awarded



UM System's MOREnet (Missouri Research and Education Network) provides internet connectivity, access, support and training to 58 higher education institutions (230,000 students), 485 K-12 school districts (832,000 students) and 132 public libraries (serving nearly 3 million Missourians) in 2022.

- UM System awarded 50.5% of the 32,098 Bachelor's or higher degrees awarded by Missouri four-year public institutions in 2022-23.
- UM System awarded 36.6% of the 1,935 research doctorates and 26.9% of the 3,593 professional doctorates awarded by Missouri public and not-for-profit private institutions in 2022-23.
- In FY23, UM System's \$37.9 million in National Science Foundation (NSF) grants represented 88.3% of all NSF grants made to Missouri public colleges and universities.
- In 2023, over 10,900 Missourians accessed [mobroadband.org](http://mobroadband.org), part of the UM System Broadband Initiative which helped the statewide build-out of high-speed internet infrastructure. MU Extension also supported residents in making individual challenges to the FCC that resulted in \$810,000 in additional funding for the state of Missouri.

**Supporting the University of Missouri is an investment in the future of Missouri.**



The university advances Missouri citizens and communities through its mission of teaching, research, public service, and economic development across our four campuses and University of Missouri Extension.

Prepared in December 2023, based on the best available and most recent data. Data Sources include: Missouri Office of Administration • UM IR • MU Institute for Public Policy • Center for Applied Research and Engagement Systems (CARES) • MU • UMKC • Missouri S&T • UMSL • UM System • UM Health Care • MU Extension • US Census Bureau • US Dept. of Health and Human Services • National Science Foundation

# Missouri Grand Challenges: Local Solutions



PULASKI COUNTY

## Knowing Missouri's Needs

MU Extension asked Missourians to share the greatest challenges they and their communities face.

We heard that feedback and made big changes in the way we work with council and local partners to improve lives. Locally, a network of county engagement and subject matter specialists now share MU's knowledge, research and engagement, targeting programs, information and assistance in:

- agriculture and environment
- youth and family
- business and community
- health and safety

**For each grand challenge, MU Extension and Engagement targets a specific gain by 2023:**



### Economic opportunity

Increase MU Extension and Engagement's economic impact to the State of Missouri from \$1 billion to \$1.5 billion overall, and from \$88 billion to \$100 billion in agriculture, the top economic sector



### Educational access and excellence

Increase participation in postsecondary education from 66% to 70%



### Health and well-being

Improve Missouri's health ranking from 40th to 35th in the nation

## Knowing Local Challenges



### CHALLENGE 1: Economic Opportunity: *Economic Mobility*

### Average Earnings per Job

Average earnings per job can reflect the type of economy, skill of employees, and availability of jobs and workers in an area. Average earnings is calculated by dividing total full-time and part-time employment by total earnings. Earnings is the sum of three components of personal income--wages and salaries, supplements to wages and salaries, and proprietors' income. Full-time and part-time jobs are counted at equal weight. Both employment for wages and salaries and proprietors employment are included, but the employment of unpaid family workers and volunteers is not included. Average earnings per job is a measure of the wages paid at jobs in the county not the earnings of people who live in the county. The dollar figures shown are not adjusted for inflation.

#### 2022 Average Earnings (\$)

**\$65,429**

Pulaski



Missouri

\$62,528 🟡

### Cost-Burdened Households (30%)

Cost-burdened households, where housing costs exceed 30% of total annual household income, is one measure of the relationship between cost of living and income. Households with high housing costs have fewer dollars remaining for other expenditures and are more likely to live paycheck-to-paycheck. The 25.78% of households in the report area are considered cost-burdened. This exceeds the state average of 24.99%.

#### Cost-Burdened Households, Percent

**25.78%**

Pulaski

Missouri

24.99%

Data Source: US Census Bureau, [American Community Survey](https://www.census.gov/data/tables/2019/acs/50000.html). 2017-21.

Data Source: US Department of Commerce, [US Bureau of Economic Analysis Regional Economic Accounts](https://www.bea.gov/data/regional-accounts). 2007-2022.



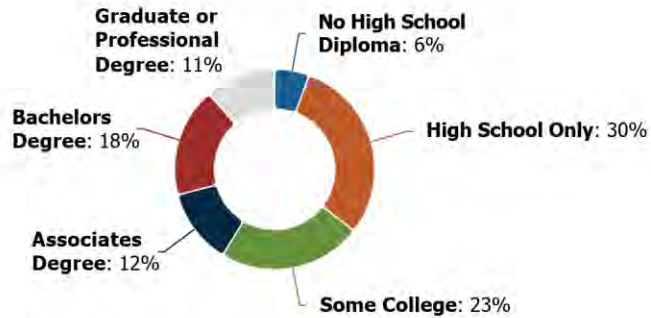


## CHALLENGE 2: Educational Access and Excellence: *Educational Attainment*

### Adult Educational Attainment

Educational attainment shows the distribution of the highest level of education achieved in the report area, and helps schools and businesses understand the needs of adults, whether it be workforce training or the ability to develop science, technology, engineering, and mathematics opportunities. Educational attainment is calculated for persons over 25 and is an estimated average for the period from 2017 to 2021.

In the report area, 23.2% of adults have at least some college education and 29.9% of adults have an associate's level degree or higher. However, 29.9% stopped their formal educational attainment after completing high school, and 5.6% of adults did not complete high school.



#### No High School Diploma

5.56%

Missouri 9.02%

Pulaski

Data Source: US Census Bureau, [American Community Survey](#). 2017-21.

Data Source: US Census Bureau, [American Community Survey](#). 2017-21.



## CHALLENGE 3: Healthy Futures: *Access to Care*

### Mental Health Care Providers

Mental health is a critical public health issue worldwide. Access to mental health services is a challenge across Missouri, which ranks 46 out of 51 states in provider access. In the trio there are approximately 60 credentialed professionals providing mental health care to serve the area's 53,955 residents. The patient-provider ratio in the report area is 899 to 1, which means there is 1 provider for every 899 persons. The ratio of persons to providers in the report area is higher than the state average of 855:1, which means there are fewer providers per person in this area.

### Primary Care Providers

Older adults make up a historically large percentage of the U.S. population and meeting the healthcare needs of an aging population can be challenging. In the report area, there are approximately 21 primary care physicians (MDs and DOs) to serve the area's 4,674 residents over the age of 65. The patient-provider ratio in the report area is 223:1, which means there is 1 provider for every 223 older adults. The ratio of adults to providers in the report area is lower than the state average of 242:1, which means there are more providers per person in this area.

#### Ratio (Population to Providers)

899:1

Missouri 855:1

Pulaski

#### Ratio (Population to Providers)

223:1

Missouri 242:1

Pulaski

Data Source: Centers for Medicare and Medicaid Services, [CMS - National Plan and Provider Enumeration System \(NPPES\)](#). December 2023.

Data Source: US Department of Health & Human Services, Health Resources and Services Administration, [HRSA - Area Health Resource File](#). December 2023.



## CHALLENGE 4: Agricultural Growth & Stewardship: *Food Security & Access*

The ability to access healthy and affordable food can be a challenge in Missouri’s rural and urban communities alike — with negative impacts on people’s health and food security status. Food insecurity is the lack of access, at times, to enough food for an active, healthy life. It is associated with many adverse social and health outcomes. Missouri’s overall food insecurity rate is 11.8% — and 12.8% for children under age 18. More than half of Missouri’s 114 counties and the City of St. Louis report food insecure populations of 12.6% or higher. Multiple interventions that address the root causes of food insecurity can impact this critical public health issue. Learn more at the [Food Security Story Map](#).

### Population Living in a Food Desert

22.51%

Pulaski

Missouri

17.69%

Data Source: US Department of Agriculture, Economic Research Service, [USDA - Food Access Research Atlas](#). 2019.



# MU EXTENSION **Serves MISSOURI and Delivers MIZZOU** through credible statewide programs

## Missouri 4-H for ages 8 – 18



**Community clubs** are organized by volunteer club leaders and teams of recognized volunteers. Members attend club meetings, elect officers, enroll in projects and plan learning and community service activities. Some clubs opt to be single-project clubs, where all members focus on the same project.



**4-H Natural Resources programs** employ hands-on activities in climate science, environmental sustainability, renewable energy, sportfishing and wildlife conservation. The **Shooting Sports program**, which teaches marksmanship, safe firearm use, hunting and archery principles, is a prime illustration of how 4-H programs promote holistic youth development and responsible citizenship. Supported by caring adult leaders, these programs offer opportunities to cultivate life skills, self-worth and conservation ethics.



**4-H's College and Career Pathways program** emphasizes the pivotal role of education in attaining career goals, creating paths to success through exposure to project areas and mentorship. In addressing workforce challenges, 4-H strives to equip young people with financial literacy and basic skills for productivity.



### Legend



Agricultural Growth & Stewardship



Economic Opportunity



Educational Access & Excellence



Health & Well-Being



MU EXTENSION **Serves MISSOURI and Delivers MIZZOU**  
 through credible statewide programs  
**Agriculture and Environment**



**MU Extension specialists**

play an important role in addressing emergencies and disasters. MU Extension specialists swiftly distribute information so farmers and ranchers can make timely decisions that safeguard their enterprises.



**Management-intensive grazing** involves dividing large fields into smaller paddocks and systematically rotating livestock among them. Producers who attend grazing schools learn how to reduce costs through improved livestock, grazing and pasture management while getting insights into fencing, watering systems and grazing system design.

**The annual impact of management-intensive grazing is estimated to be \$125 MILLION per year in Missouri.**



**The Missouri Master Gardener program**

enables people of all ages to get in-depth horticultural training and then apply what they've learned to improve their communities and educate others about gardening.



**In 2022, almost 4,000 Missouri Master Gardeners completed over 133,000 VOLUNTEER HOURS throughout the state.**

**Legend**



Agricultural Growth & Stewardship



Economic Opportunity



Educational Access & Excellence



Health & Well-Being

# Pulaski County

## Agriculture and Environment

### Local Profiles and Stories



 University of Missouri

#### 2023 CENTURY FARM FAMILY AWARD RECIPIENTS IN PULASKI COUNTY



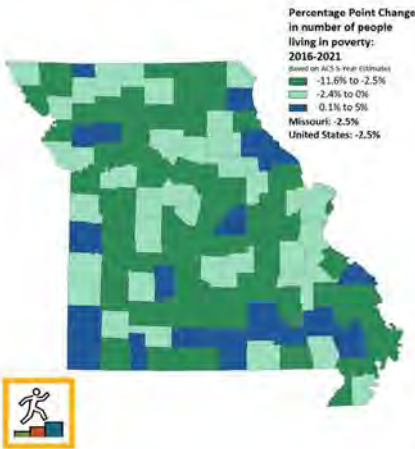
The University of Missouri Extension in Pulaski County would like to congratulate Kent and Tammy Hicks, as well as their family, in receiving the 2023 Century Farm Family Award. This award is given to recipients who have contributed to agriculture by owning and operating the same Missouri farm for one hundred years or more. Those present in the first photo were multiple generations of the Hick's family. Council members present were Kay Powell, Jim Dack, Stacy Amick-Kramer, MaryFran Mier, and University Extension & Engagement Specialist Brandi Richardson. The second photo is of the original homesteaders, D. W. (Daniel Webster) Hicks and his wife Nellie Francis Hicks. The photo was taken around 1950.

#### 2023 Pulaski County Missouri State Fair Farm Family





# MU EXTENSION **Serves MISSOURI and Delivers MIZZOU** through credible statewide programs **Business and Community**



The **Missouri Economy Indicators (MEI)** series explores business, industry and workforce topics that affect Missouri's economy. The data is shared through newsletters and on social media. MU Extension faculty and staff receive talking points and collateral to share with local stakeholders.

**In 2022, MEI published 15 issues, and MEI online resources were accessed MORE THAN 5,000 TIMES. Two out of five MEI newsletter recipients reported using the information to help guide policy or decision-making in their work.**



Missourians from all walks of life celebrated the **2023 Missouri Good Neighbor Week**, Sept. 28 to Oct. 4, by completing and reporting neighboring acts and nominating others as the most engaged neighbors in their counties.

**In 2023, the goal was to document 15,000 acts of neighboring. That goal was surpassed with 19,752 Missourians being positively affected during MISSOURI GOOD NEIGHBOR WEEK.**

AMERICA'S  
SBDC  
MISSOURI

CLIENT HIGHLIGHT



LOGS  
- OF -  
GLORY

The **Missouri Small Business Development Centers** (SBDC) provide professional training and customized one-on-one counseling to small businesses across the state. Working with the Missouri SBDC helps business owners make confident decisions.

**FY2020-2022, Missouri SBDC ASSISTED 878 STARTUPS and helped Missouri small businesses earn more than \$440 MILLION.**

## Legend



Agricultural Growth & Stewardship



Economic Opportunity



Educational Access & Excellence



Health & Well-Being

# Pulaski County

## Business and Community

### Local Impact



**Pulaski County Extension**  
Published by Stacy Amick Kramer · 3h · 🌐

Extension Council Chair, Stacy Amick Kramer, surveying county high school students on their interest and views of agriculture at the WCC Career Fair





MU EXTENSION **Serves MISSOURI and Delivers MIZZOU**  
 through credible statewide programs  
**Community and Professional Health Education**



The **Diabetes Prevention Program** is a CDC-recognized program provided by licensed lifestyle coaches to prevent type 2 diabetes. Through lifestyle coaching participants can achieve sustainable weight loss, increase in physical activity and learn coping skills to manage stress.

**More than 1 IN 3 PARTICIPANTS**  
**have reached the**  
**5 - 7% WEIGHT LOSS GOAL.**



**Strengthening Families Program: for Parents and Youth 10-14,** is a seven-session series for parents or caregivers and their young teens to attend together to improve family communication, resolve conflict and improve parental skills.

**A research study conducted by the Partnerships in Prevention Science Institute found a RETURN OF \$9.60 for every dollar spent implementing the Strengthening Families Program.**



Resilience is the capacity to adapt when faced with adversity. **WeCanPROSPER Resilience Training** is a 2.5 hour training for participants to evaluate their personal resilience, tap into resources and create an action plan to enhance their resilience.

**100%** of participants indicate that the skills and techniques they learned will help them become **MORE RESILIENT.**

**Legend**



Agricultural Growth & Stewardship



Economic Opportunity



Educational Access & Excellence



Health & Well-Being



# Pulaski County

## Community and Professional Health Education

### Local Impact





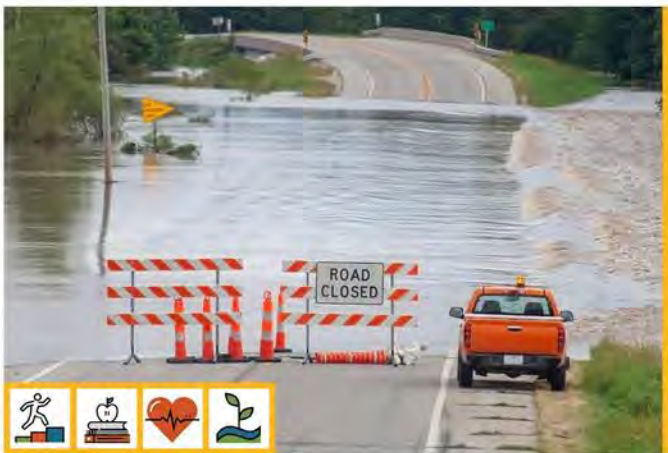
# MU EXTENSION **Serves MISSOURI and Delivers MIZZOU** through credible statewide programs **First Responder Education**



The Law Enforcement Training Institute (LETI) has provided basic and advanced training for law enforcement since 1948. LETI's **Basic Peace Officer Academy** exceeds the 600 hours of training required for licensure in Missouri. From 2019 through 2023, the basic academy has licensed almost 300 peace officers, more than any other academy in the state. During that time, all but one graduate became employed by a law enforcement agency. LETI graduates come from around the state and return to their communities to serve and protect.



The programming from the **MU Fire and Rescue Training Institute** (FRTI) is available to all qualified fire and emergency first responders. Seventy percent of courses are held at the local departments or agencies. With most of the state's fire service personnel considered volunteer or part-time, this local access and flexibility assures training opportunities for all firefighters and emergency responders.



The **Missouri Extension Disaster Education Network** provides education and technical assistance to individuals and families, local governments, schools and organizations so they can prepare for and respond to natural and man-made disasters. Because of the unique relationship it maintains with each community, MU Extension is a key resource for the public, emergency services and public officials.



## Legend



Agricultural Growth & Stewardship



Economic Opportunity



Educational Access & Excellence



Health & Well-Being



MU EXTENSION **Serves MISSOURI and Delivers MIZZOU**  
 through credible statewide programs  
**Health and Human Sciences**

**“This course made me more self-sufficient and improved my family’s access to quality food.”**



MU Extension offers research-based **home food preservation** courses and publications to help people cut food waste and save money.



Preschool through junior high youths learn how to maintain healthy lifestyles through information about nutrition, food safety and physical activity. **Show-Me Nutrition** classes support Missouri’s Show-Me education standards for health and physical education and the state’s School Wellness Policy.

**“We have struggled with our daughter’s picky eating for years and have tried so many techniques to try and get her to eat new foods. Your influence on her has worked magic this year. She has come home so excited about trying new foods and has now become not only willing but excited to try new things.”**

**Parent of a Show-Me Nutrition participant**



**Stay Strong, Stay Healthy** teaches older adults easy yet powerful exercises to boost strength, balance and daily life capabilities. Participants also gain insights into nutrition for healthy aging and active living.

**After eight weeks, Stay Strong, Stay Healthy participants significantly IMPROVED their STRENGTH, BALANCE and SLEEP QUALITY.**

**Legend**



Agricultural Growth & Stewardship



Economic Opportunity



Educational Access & Excellence



Health & Well-Being